



ANOGEN - A Division of YES Biotech Laboratories Ltd.

2355 Derry Road East, Unit 23, Mississauga, ON, Canada L5S 1V6 • Tel: (905) 677-9221 • Fax: (905) 677-0023

Mouse Anti-Human PTMA Monoclonal Antibody Datasheet

Product Name: mAb anti-human PTMA

Clone No.: 1F2

Catalogue No.: MO-T40087G

Quantity: 0.5 mg/vial

Description: Mouse monoclonal antibody to human prothymosin alpha (PTMA)

Purification: Protein G affinity purified

Product Type: Primary antibody

Target Protein: Human prothymosin alpha (PTMA)

Immunogen: A short peptide (eeaengrdapangan) derived from PTMA was conjugated with KLH for immunization.

Fusion Myeloma: Sp2/0-Ag14

Specificity: This antibody is reactive to PTMA peptide (eeaengrdapangan) and GST tagged recombinant PTMA protein.

Species Reactivity: Human, others not tested

Host / Isotype: Mouse, IgG1 Kappa

Formulation: Lyophilized from a solution in 0.01M PBS, pH 7.0

Reconstitution: Double distilled water is recommended to adjust the final concentration to 1.00mg/mL.

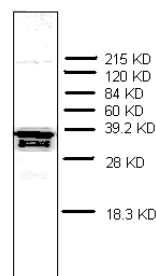
Storage: Store at -20°C

Research Area: Chromatin-remodelling, cell proliferation, oncology

Background: PTMA (prothymosin alpha) is the precursor of thymosin α 1. It is an acidic, non-histone nuclear protein with 109-111 amino acids. PTMA is implicated with cell cycle regulation, chromatin

remodeling, expression of oxidative stress-response genes and immunomodulation. PTMA is elevated in malignancies such as breast cancer, gastric cancer, prostate and bladder cancers. PTMA is a potential biomarker for the prognosis of cancer treatment.

Applications: **Western blot:** This antibody is reactive to GST tagged 38.4KD recombinant PTMA protein.



The GST tagged recombinant PTMA was loaded at 200ng/lane. The anti-PTMA clone 1F2 was used at 1 μ g/mL and the HRP conjugated goat anti-mouse IgG was used at 1:2,000 dilution.

ELISA: This antibody is reactive to recombinant PTMA protein. The anti-PTMA clone 1F2 can be used as a **capture** antibody in sandwich ELISA when biotin labelled 4A7 is used as detection antibody.

References: If research is published using this product, please inform Anogen in order to cite the reference on this datasheet. Anogen will provide one unit of product in the same category as gratitude.

This product is for **LABORATORY RESEARCH USE** and further manufacture **ONLY**, and cannot be administrated to human and animals for use in diagnostic and therapeutic procedures.

Manufactured by ANOGEN - A Division of YES Biotech Laboratories Ltd.