



## Mouse Anti-Human S100A7 Monoclonal Antibody Datasheet

**Product Name:** mAb anti-human S100A7

**Clone No.:** 2A3

**Catalogue No.:** MO-T40088F

**Quantity:** 0.5 mg/vial

**Description:** Mouse monoclonal antibody to human S100A7 (psoriasin).

**Purification:** Protein G affinity purified

**Product Type:** Primary antibody

**Target Protein:** Human S100A7 (psoriasin)

**Immunogen:** A short peptide (tdyhkqshgaapcsggs) derived from human S100A7 (psoriasin) was conjugated with KLH for immunization.

**Fusion Myeloma:** Sp2/0-Ag14

**Specificity:** This antibody is reactive to S100A7 peptide (tdyhkqshgaapcsggs) and GST tagged recombinant S100A7 protein.

**Species Reactivity:** Human, others not tested

**Host / Isotype:** Mouse, IgG1 Kappa

**Formulation:** Lyophilized from a solution in 0.01M PBS, pH 7.0

**Reconstitution:** Double distilled water is recommended to adjust the final concentration to 1.00mg/mL.

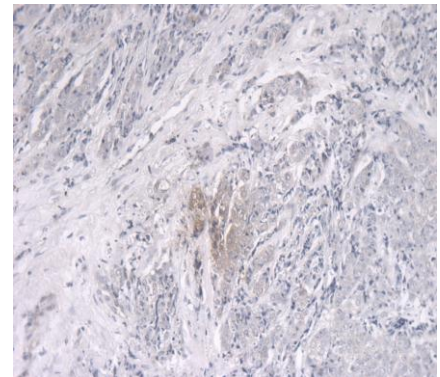
**Storage:** Store at -20°C

**Research Area:** Oncology, psoriasis

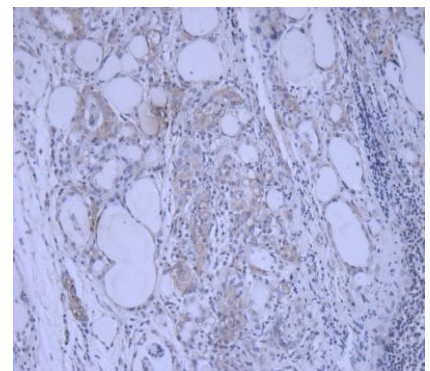
**Background:** S100A7 is 11 kilo-dalton calcium binding protein with 2 EF motifs. It is also called psoriasin due to its significantly elevated level in the skin lesion of psoriasis. The protein is over-expressed in squamous cell

tumors of the skin, lung and breast. S100A7 expression is induced after activation of epidermal growth factor receptor.

**Applications:** **IHC:** This antibody reacts with breast cancer tissue and thyroid cancer tissue section. The sections were treated by heat induced epitope retrieval before primary antibody (20µg/mL) was added. The secondary antibody was an HRP-labelled goat anti-mouse IgG antibody.



(Breast cancer section)



(Thyroid gland cancer section)

This product is for **LABORATORY RESEARCH USE** and further manufacture **ONLY**, and cannot be administrated to human and animals for use in diagnostic and therapeutic procedures.

Manufactured by ANOGEN - A Division of YES Biotech Laboratories Ltd.



## **ANOGEN - A Division of YES Biotech Laboratories Ltd.**

2355 Derry Road East, Unit 23, Mississauga, ON, Canada L5S 1V6 • Tel: (905) 677-9221 • Fax: (905) 677-0023

**ELISA:** This antibody is reactive to recombinant S100A7 protein.

category as gratitude.

**References:**

If research is published using this product, please inform Anogen in order to cite the reference on this datasheet. Anogen will provide one unit of product in the same

**This product is for LABORATORY RESEARCH USE and further manufacture ONLY, and cannot be administrated to human and animals for use in diagnostic and therapeutic procedures.**

**Manufactured by ANOGEN - A Division of YES Biotech Laboratories Ltd.**