



Mouse Anti-Human PSMA Monoclonal Antibody Datasheet

Product Name: mAb anti-human PSMA

Clone No.: 4H11

Catalogue No.: MO-T40086C

Quantity: 0.5 mg/vial

Description: Mouse monoclonal antibody to human Prostate Specific Membrane Antigen (PSMA)

Purification: Protein G affinity purified

Product Type: Primary antibody

Target Protein: Human Prostate Specific Membrane Antigen (PSMA)

Immunogen: Crude membrane protein extraction from PSMA expression LNCap cells, and a PSMA derived peptide (ESKVDPSKA) coupled with KLH.

Fusion Myeloma: Sp2/0-Ag14

Specificity: This antibody is reactive to PSMA expression LNCap cells and the PSMA peptide in EIA.

In IHC staining experiment, this antibody reacts to human prostatic carcinoma tissue, but not to normal prostatic tissue.

Species Reactivity: Human, others not tested

Cross-Reactivity: Little or no cross-reactivity to normal prostatic tissue.

Host / Isotype: Mouse, IgG1 Kappa

Formulation: Lyophilized from a solution in 0.01M PBS, pH 7.0

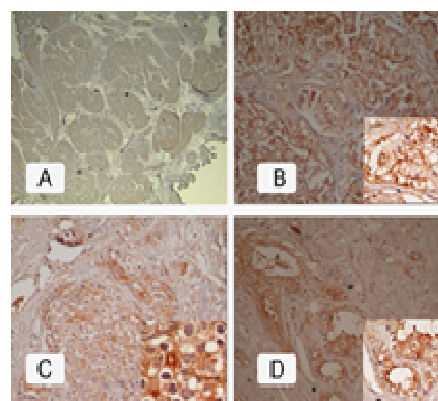
Reconstitution: Double distilled water is recommended to adjust the final concentration to 1.00mg/mL.

Storage: Store at -20°C

Research Area: Immunology, cell type, prostate malignant carcinoma marker

Background: Prostate specific membrane antigen (PSMA) is a type II trans-membrane glycoprotein found in the epithelium of prostate. It is also detectable in duodenal mucosa, renal tubules and some neuroendocrine cells. In other normal tissue, PSMA expression is not detectable. Because the expression of this membrane is elevated in malignant prostate tumour, PSMA has been used as a marker as well as a therapeutic target for prostate cancer. Elevated PSMA expression has also been identified in metastases of lymph nodes.

Applications: Immunohistochemistry



This product is for LABORATORY RESEARCH USE and further manufacture ONLY, and cannot be administered to human and animals for use in diagnostic and therapeutic procedures.

Manufactured by ANOGEN - A Division of YES Biotech Laboratories Ltd.



ANOGEN - A Division of YES Biotech Laboratories Ltd.

2355 Derry Road East, Unit 23, Mississauga, ON, Canada L5S 1V6 • Tel: (905) 677-9221 • Fax: (905) 677-0023

PSMA were detected in paraffin-embedded human prostatic tissue and prostatic carcinoma tissue with mAb 4H11 Clone (A: normal prostate tissue, ID 0903027b; B: prostate carcinoma, ID 0906360g; C: prostate carcinoma, ID 0905742a; D: prostate carcinoma, ID 0905779)

Indirect ELISA: This antibody is reactive to PSMA expressing LNCap cells coated ELISA plate.

References:

If research is published using this product, please inform Anogen in order to cite the reference on this datasheet. Anogen will provide one unit of product in the same category as gratitude.

This product is for LABORATORY RESEARCH USE and further manufacture ONLY, and cannot be administered to human and animals for use in diagnostic and therapeutic procedures.

Manufactured by ANOGEN - A Division of YES Biotech Laboratories Ltd.