



Mouse Anti-Human Promyelocytic Leukemia Protein Monoclonal Antibody Datasheet

Product Name: mAb anti-human promyelocytic leukemia protein (PML) **Clone No.:** B3E9

Catalogue No.: MO-T40010A **Quantity:** 0.5 mg/vial

Description: Mouse monoclonal antibody to human promyelocytic leukemia protein (PML) **ring finger domain**

Purification: Protein G affinity purified

Product Type: Primary antibody

Target Protein: Human PML and PML/RAR α chimera

Immunogen: Recombinant partial human PML containing the ring finger domain

Fusion Myeloma: Sp2/0-Ag14

Specificity: This antibody recognizes normal PML proteins of lower molecular weight, and also recognizes the high molecular weight PML/RAR α chimeric protein in promyelocytic leukemia patients.

Species Reactivity: Human, others not tested

Host / Isotype: Mouse, IgG1 Kappa

Formulation: Lyophilized in pH 7.4, 0.01M PBS.

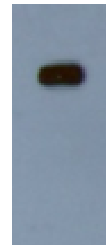
Reconstitution: Double distilled water is recommended to adjust the final concentration to 1.00mg/mL.

Storage: Store at -20 $^{\circ}$ C

Research Area: Life science research, Oncology

Background: Acute promyelocytic leukemia (PML) is a type of acute myelogenous leukemia that is caused by the translocation of the retinoic acid receptor alpha (RAR α) gene at chromosome 17 to the promyelocytic leukemia (PML) gene at chromosome 15. The chimeric protein (PML/RAR α) has a higher molecular weight than normal PML protein. The altered proteins block DNA transcription and differentiation of granulocytes, reduce the production of red cells and platelets, consequently, resulting in anemia and thrombocytopenia.

Applications: **Western Blot:**



Western blot analysis of K562 cell lysate using 0.5mg/mL mouse anti-PML mAb clone B3E9. The band shows on the blot is the 106KDa chimeric PML/RAR α protein.

References: If research is published using this product, please inform Anogen in order to cite the reference on this datasheet. Anogen will provide one unit of product in the same category as gratitude.

This product is for **LABORATORY RESEARCH USE** and further manufacture **ONLY**, and cannot be administrated to human and animals for use in diagnostic and therapeutic procedures.

Manufactured by ANOGEN - A Division of YES Biotech Laboratories Ltd.