



## Mouse Anti-human Amyloid Beta Peptide N-terminus Antibody Datasheet

**Product Name:** mAb anti-human amyloid beta peptide N-terminus    **Clone No.:** NT 5B8

**Catalogue No.:** MO-M40094D    **Quantity:** 0.5 mg/vial

**Description:** Mouse monoclonal antibody against **N-terminal** sequence of human amyloid beta peptides

**Purification:** Protein G affinity purified

**Product Type:** Primary antibody-**Capture antibody** in matched antibody pair.

**Target Protein:** Human beta amyloid peptide 42

**Immunogen:** Full length human beta amyloid peptide 42

**Fusion Myeloma:** Sp2/0-Ag14

**Specificity:** This antibody recognizes the N-terminal peptide (DAEFRHDS) of human beta amyloid peptides and also reacts with full length A $\beta$ 40, A $\beta$ 42 and A $\beta$ 43.

**Species**                      Human

**Reactivity:**

**Host / Isotype:** Mouse, IgG1 Kappa

**Formulation:** Lyophilized from a solution in 0.01M PBS pH7.2

**Reconstitution:** Double distilled water is recommended to adjust the final concentration to 1.00 mg/mL.

**Storage:** Store at -20°C

**Research Area:** Aging and neurodegenerative diseases

**Background:** Amyloid beta peptides A $\beta$ 42 and A $\beta$ 40 have been investigated extensively for predicating Alzheimer's disease. A recent study on amyloid beta peptide A $\beta$ 43 in brain showed that A $\beta$ 43 is more fibrillogenic than other amyloid beta peptides and could be more

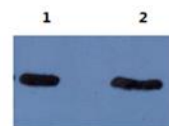
useful as a biomarker or therapeutic target for Alzheimer's disease.

Since A $\beta$ 40, A $\beta$ 42 and A $\beta$ 43 are different only at the few C-end amino acids, antibody to N-terminal sequence can bind with all three amyloid beta peptides.

### Applications:

#### Western blot:

The following image is the result of using mAb 5B8 ascites at 1:5000 dilution to detect A $\beta$ 40 and A $\beta$ 42 on Western blot. Lane 1: A $\beta$ 42, Lane 2: A $\beta$ 40.



#### Sandwich ELISA:

This antibody (clone NT 5B8) reacts with full length A $\beta$ 40, A $\beta$ 42 and A $\beta$ 43 at the N-terminus. The antibody can be used as capture antibody in combination with anti-A $\beta$ 42 clone CA9 10C11 (Cat. No.: MO-M40093B) in sandwich ELISA application for the detection of A $\beta$ 42. In addition, this antibody can be used as capture antibody for detection of A $\beta$ 40 in combination with anti A $\beta$ 40 clone CV9 7B10 (Cat. No.:MO-M40095A ).

### References:

If research is published using this product, please inform Anogen in order to cite the reference on this datasheet. Anogen will provide one unit of product in the same category as gratitude.

**This product is for LABORATORY RESEARCH USE and further manufacture ONLY, and cannot be administrated to human and animals for use in diagnostic and therapeutic procedures.**

**Manufactured by ANOGEN - A Division of YES Biotech Laboratories Ltd.**